

**MEET**

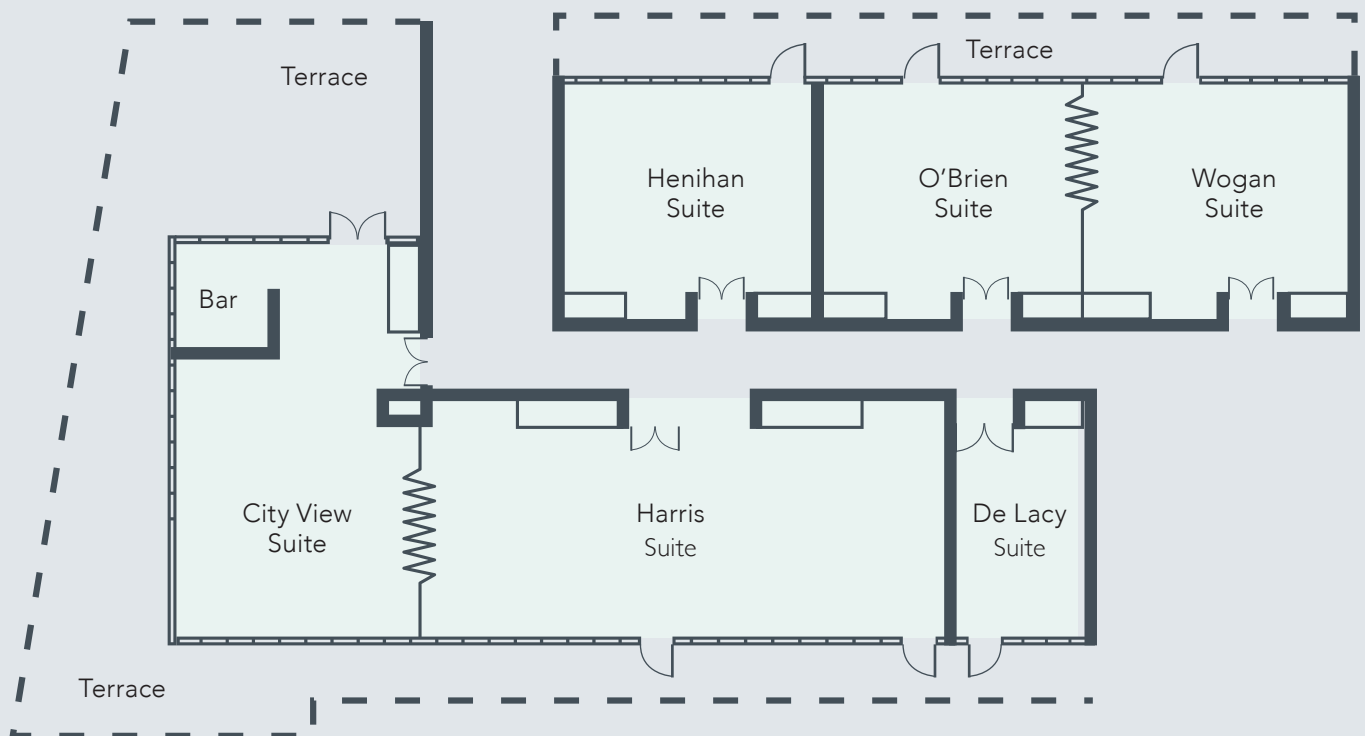
AT THE FOUR STAR

**LIMERICK STRAND HOTEL**



## LEVEL 6 WITH CITY VIEW SUITE

The physical quality of Level 6 speaks for itself. Our dedicated business level offers 6 meeting rooms catering for 10 to 120 delegates along with break out space & business centre. The glass walls offer stunning vistas of the city & river Shannon adding a dramatic backdrop for your meeting & conference.



'OUR DEDICATED EVENTS LEVEL  
 "LEVEL 6" BOASTS FLOOR TO CEILING  
 WINDOWS & NETWORKING SPACE'

	THEATRE	CLASSROOM	CABERAT	BOARDROOM	U-SHAPED	BANQUET	DIMENSIONS	AREA M <sup>2</sup>
City View Suite	36	24	18	14	18	30	7 x 11.3 x 3	80.5
Harris Suite	80	28	48	36	38	44	15.2 x 6.5 x 2	98.8
City View & Harris Suite	120	60	66	50	52	110	22.2 x 6.5 x 3	144.3
Henihan Suite	40	18	18	16	16	24	7.4 x 6.6 x 2.6	48.48
O'Brien Suite	40	18	18	16	16	24	7.5 x 6.6 x 2.6	48.75
Wogan Suite	40	18	18	16	16	24	7.6 x 6.5 x 2.6	49.40
O'Brien & Wogan Suite	80	44	48	34	40	70	7.5 x 13.1 x 3	98.15
De Lacy Suite	-	-	-	10	-	-	3.9 x 6.6 x 3	25.74

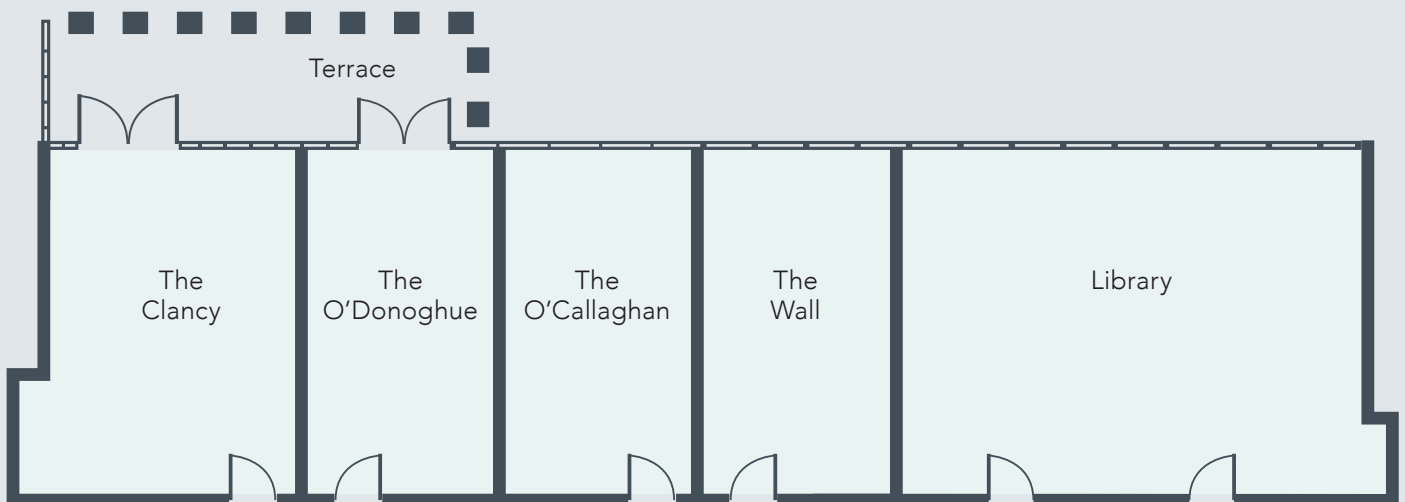


# EXECUTIVE BOARDROOMS

Our ground floor executive boardrooms cater for 2–40 people, with natural daylight & air-conditioning. Our Library & Clancy Room now offer cutting-edge Wireless Video Conferencing, ensuring a seamless cable free experience for presentations. Commercial Grade screens enable high-definition 4K image projection. The system is compatible with any laptop supporting a 4K auto framing camera, a wide 120-degree viewing angle and acoustic clarity technology microphones.

	THEATRE	CLASSROOM	CABERAT	BOARDROOM	U-SHAPED	BANQUET	DIMENSIONS	AREA M <sup>2</sup>
Clancy Room	-	-	-	8	-	-	5.3 x 6.1 x 2.6	32.33
O'Donoghue Room	-	-	-	9	-	-	5.3 x 6.1 x 2.6	21.35
O'Callaghan Room	-	-	-	8	-	-	5.3 x 6.1 x 2.6	21.35
Wall Room	-	-	-	6	-	-	5.3 x 6.1 x 2.6	21.35
Library	40	14	21	18	16	33	8.25 x 5.2 x 2.9	42.90

## '5 GROUND FLOOR EXECUTIVE BOARDROOMS WITH STATE-OF-THE-ART TECHNOLOGY'

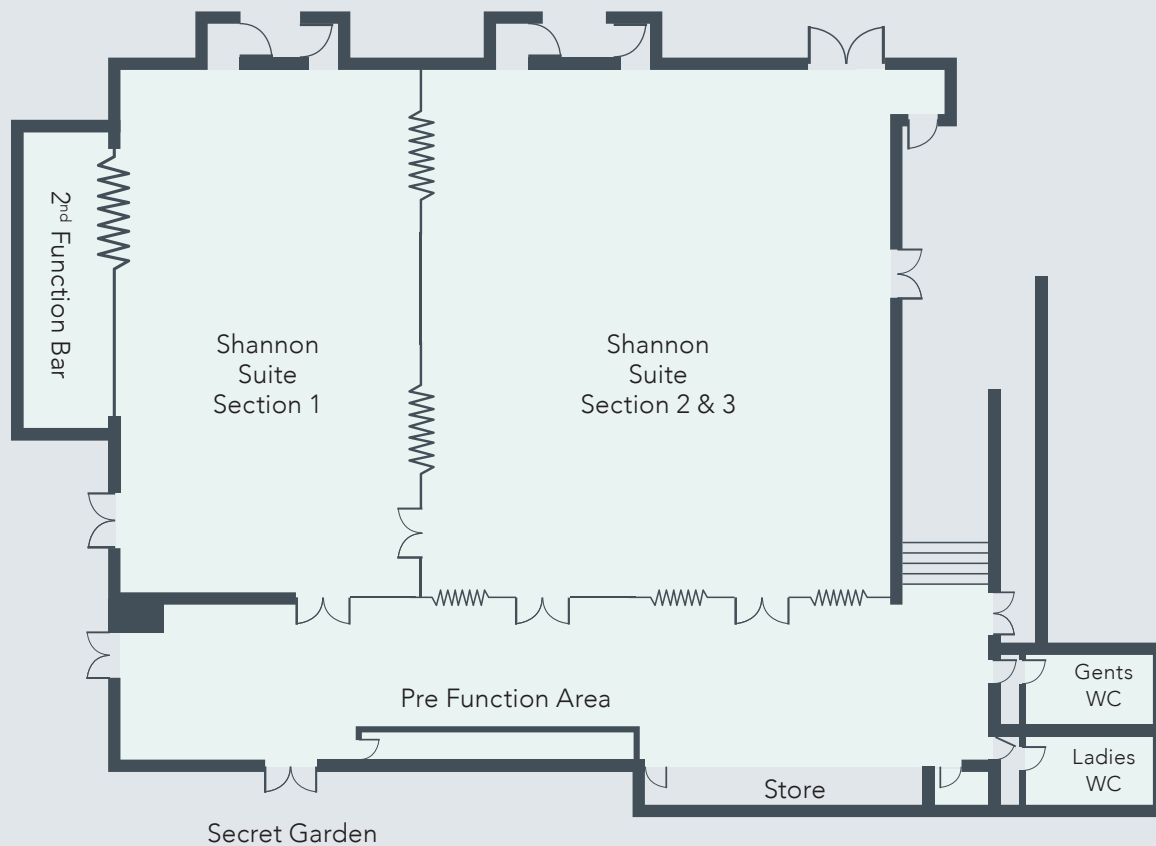




# SHANNON SUITE & SECRET GARDEN

Our ballroom can cater for 600 delegates or 480 guests for gala dinners. The room can be divided into three sections to create a more intimate meeting room. Boasting high ceilings, natural daylight and recently upgraded lighting system it offers everything you require for a large event.

The adjacent fully covered and heated Secret Garden is an ideal breakout/networking space.



**'BOASTING  
HIGH CEILINGS,  
NATURAL DAYLIGHT  
AND AV EQUIPMENT  
– IDEAL EXHIBITION  
SPACE'**

	THEATRE	CLASSROOM	CABERAT	BOARDROOM	U-SHAPED	BANQUET	DIMENSIONS	AREA M <sup>2</sup>
The Shannon Suite	600	360	250	95	100	480	24.3 x 17 x 5.3	413.1
Shannon Suite 1	150	92	72	36	30	110	9.6 x 17 x 5.3	163.2
Shannon Suite 2 & 3	260	120	100	50	70	150	14.6 x 17 x 5.3	248.5
Shannon Suite 3	145	62	70	30	30	80	7.0 x 17 x 5.3	119
Prefunction Area	-	-	-	-	-	-	27.5 x 2.4 x 5	29.9



## CONFERENCE & MEETING FACILITIES

- 13 individually controlled air conditioned meeting rooms
- 5 Groundfloor Executive Boardrooms
- Natural daylight – black out facility optional
- Dedicated conference coordinator and team
- Catering for 2 to 600 delegates
- Complimentary high speed WIFI
- All rooms can be configured to requirements
- In-house AV equipment included in room hire
- Dedicated events 'Level 6' with floor to ceiling windows
- Full range of catering services including one to one meeting with our award winning chefs
- Specially designed cargo bay to handle all deliveries with direct access to ballroom
- Underground carpark

## PRIVATE DINING

The Limerick Strand Hotel is ideal for an exclusive private dining event or a gala ball, offering sophisticated elegance in truly stunning surroundings with award winning food. Our Executive Chef and his wonderful team focus on surpassing the expectations of our guests by using the freshest local ingredients where possible in all our dishes. Expertly prepared then served simple and fresh, you can really taste the place.

### DINING CAPACITIES:

Library 20-33 people

City View Suite 50-110 people

Shannon Suite 120-480 people



## HOTEL FACILITIES

- 184 bedrooms, executive floor with lounge
- 13 Junior Suites with stunning river views
- Award Winning River Bar & Restaurant
- On site Energize Health Club
- Secure underground car park
- 24 hour room service
- Complimentary WiFi & 24 hour business centre
- Niall Colgan Hairdressing and Namaste Skin Clinic & Urban Day Spa on grounds of the hotel





20 Minutes to Shannon Airport

60 Minutes to Galway

100 Minutes to Cork

90 Minutes to Dublin

Discover a warm Limerick welcome in a hotel that takes pride of place in the heart of Limerick city, ideally located on O’Callaghan Strand, with stunning vistas of the river Shannon and a birds-eye view of every landmark in the historical city... the economic core of Ireland’s Mid-West. Offering a designed-for-purpose Business & Conference Centre with a choice of 13 light-filled meeting rooms catering for 2 - 600 delegates, the four star Limerick Strand Hotel is the ideal central venue for your conference or event.

Limerick is the third largest city in Ireland and a Wild Atlantic Way Gateway City. Often dubbed Ireland’s most friendly and welcoming destination, it is a cultural hotbed renowned for its many archaeological and historic wonders. The hotel is only a few minutes walk from many attractions including the historical King Johns Castle, St Mary Cathedral and the newly opened International Rugby Experience.

Limerick is an ideal central location just 20 minutes from Shannon International Airport and with easy access to all major driving routes. The hotel is 60 minutes to the fabulous Wild Atlantic Way Coastline. The city itself offers delegates modern facilities in a vibrant bustling setting with lots of opportunity for corporate entertainment.



Limerick  
Strand  
Hotel

T: 061 421800 E: [events@strandlimerick.ie](mailto:events@strandlimerick.ie) A: Limerick Strand Hotel, Ennis Road, Limerick, V94 03F2

[www.strandlimerick.ie](http://www.strandlimerick.ie)

