



CONFERENCE & MEETINGS FACILITIES

- 13 individually controlled air conditioned meeting rooms
- Natural daylight – black out facility optional
- Dedicated conference coordinator and team
- Catering for 2 to 500 delegates
- Complimentary high speed WIFI
- All rooms can be configured to requirements
- In-house AV equipment included in room hire
- Dedicated events 'Level 6' with floor to ceiling windows
- Full range of catering services including one to one meeting with our award winning chefs
- Specially designed cargo bay to handle all deliveries with direct access to ballroom
- Coach Parking & Underground carpark
- Day delegate rates available

PRIVATE DINING

The Limerick Strand Hotel is ideal for an exclusive private dining event or a gala ball, offering sophisticated elegance in truly stunning surroundings with award winning food. Our Executive Chef and his wonderful team focus on surpassing the expectations of our guests by using the freshest local ingredients where possible in all our dishes. Expertly prepared then served simple and fresh, you can really taste the place.

DINING CAPACITIES:
Library 20-33 people
City View Suite 50-120 people
Shannon Suite 120-500 people



HOTEL FACILITIES

- 184 bedrooms, executive floor with lounge
- 13 Junior Suites with stunning river views
- Award Winning River Bar & Restaurant
- On site Energize Health Club & Niall Colgan Hairdressing
- Secure underground car park
- 24 hour room service
- Complimentary WiFi & 24 hour business centre



20 Minutes to Shannon Airport

60 Minutes to Galway

100 Minutes to Cork

90 Minutes to Dublin

Discover a warm Limerick welcome in a hotel that takes pride of place in the heart of Limerick city, ideally located on O'Callaghan Strand, with stunning vistas of the river Shannon and a birds-eye view of every landmark in the historical city. Offering a designed-for-purpose Business and Conference Centre with a choice of 13 light-filled meeting rooms catering for 2 - 600 delegates, the four star Limerick Strand Hotel is the ideal central venue for your conference or event.

Limerick the third largest city in Ireland and also its most friendly and welcoming destination, is a cultural hotbed renowned for its many archaeological and historic wonders... the economic core of Ireland's Mid-West. Limerick is an ideal central location just 20 minutes from Shannon airport, it boasts easy access to all major driving routes. Limerick city offers delegates modern facilities in a vibrant bustling setting with lots of opportunity for corporate entertainment.



MEET
AT THE FOUR STAR
LIMERICK STRAND HOTEL



T: 061 421800 E: events@strandlimerick.ie A: Limerick Strand Hotel, Ennis Road, Limerick, V94 03F2
www.strandlimerick.ie





LEVEL 6

The physical quality of Level 6 speaks for itself. Our dedicated business level offers 6 meeting rooms catering for 10 to 15 delegates along with break out space & business centre. The glass walls offer stunning vistas of the city & river Shannon adding a dramatic backdrop for your meeting & conference.



BOARDROOMS

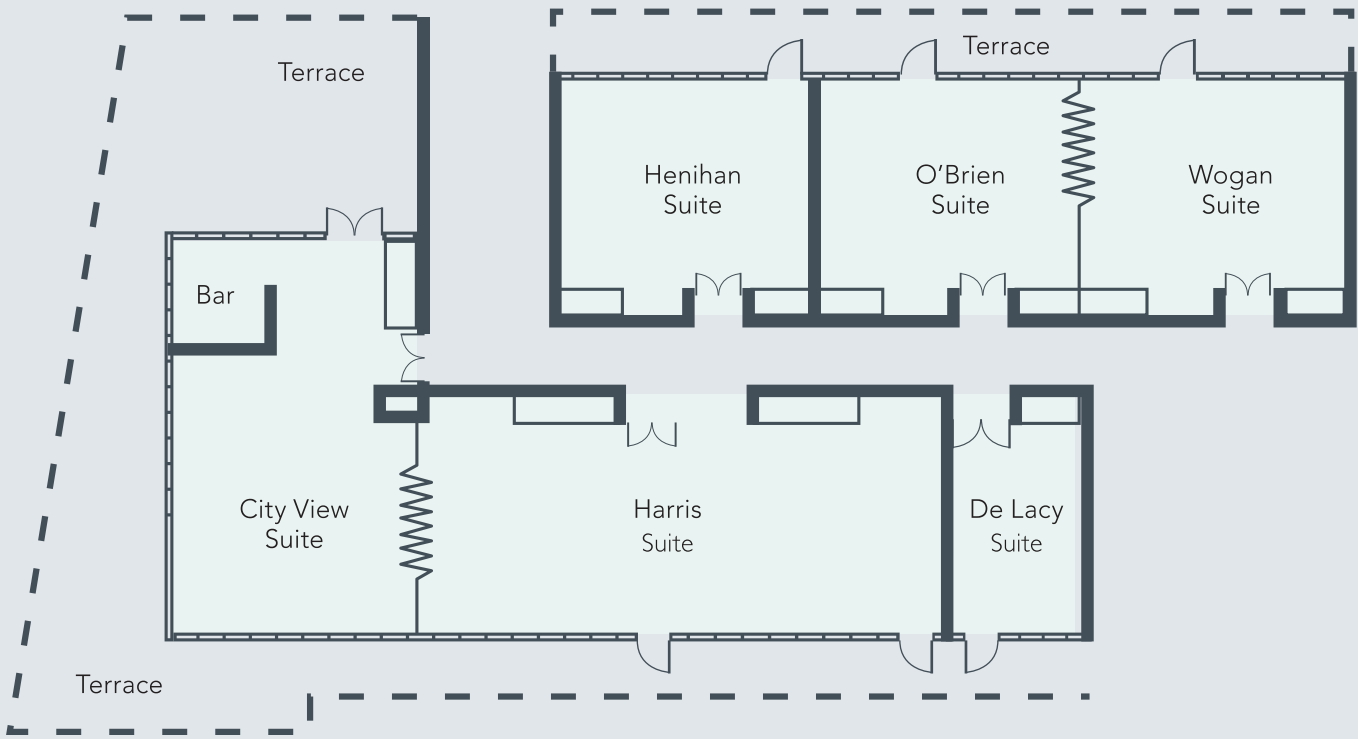
As well as offering a designed-for-purpose Business and Conference Centre the hotel boasts 5 ground floor boardrooms catering for meetings of 2 – 20 people. Ideal for conference breakout rooms or boardroom meetings. Boasting natural daylight, air conditioning and complimentary WIFI



SHANNON SUITE

Our ballroom can cater for 600 delegates or 500 guests for gala dinners. The room can be divided into three salons to create a more intimate meeting room. Boasting high ceilings, natural daylight and recently upgraded lighting system it offers everything you require for a large event.

The adjacent fully covered and heated Secret Garden is an ideal breakout/networking space.

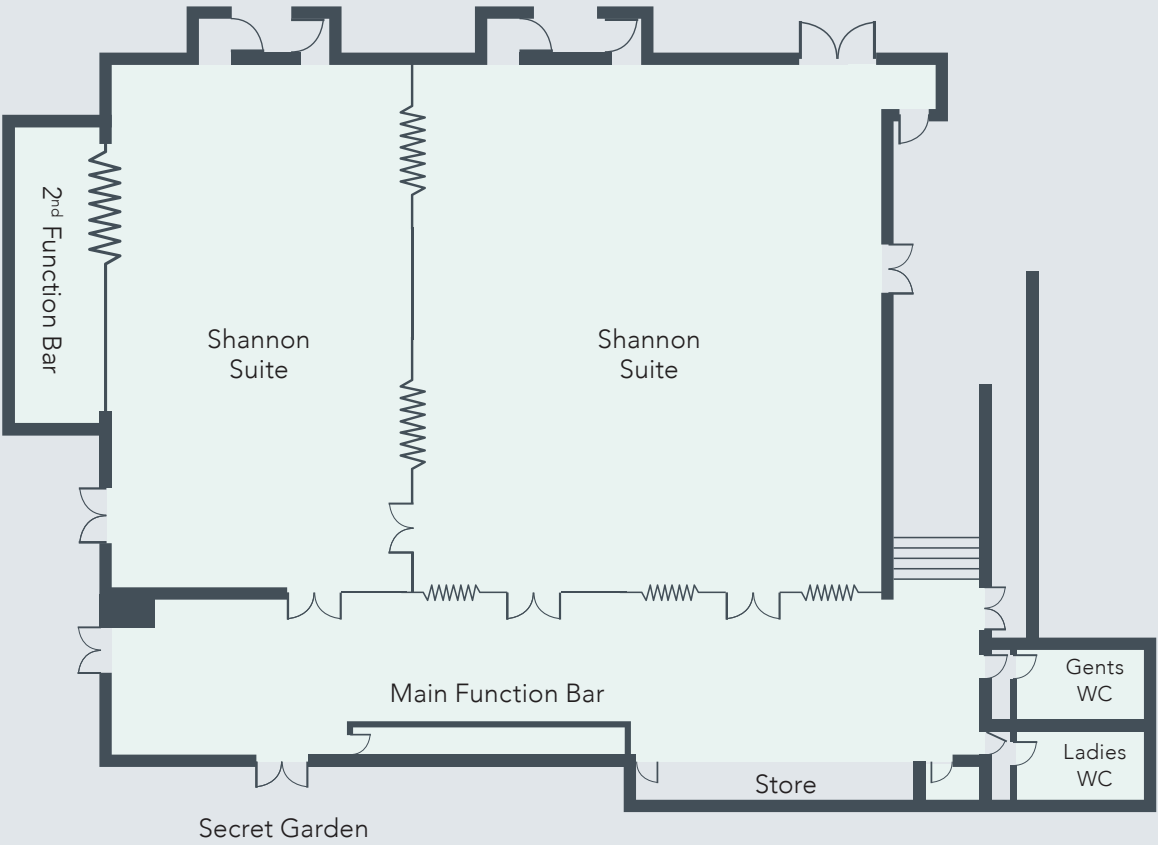
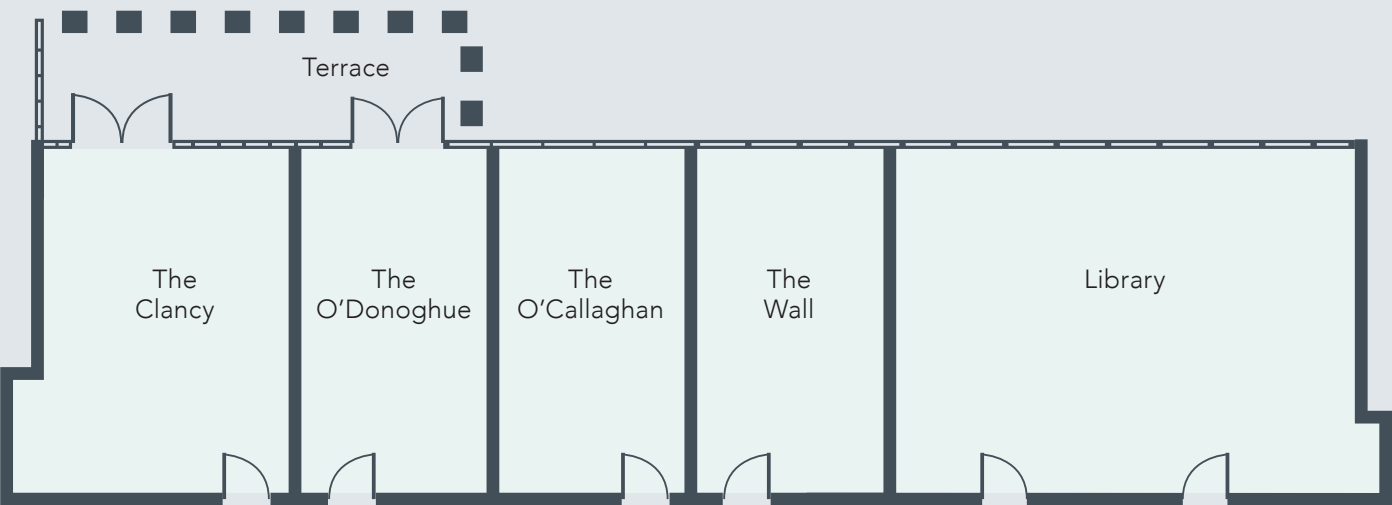


‘OUR DEDICATED EVENTS LEVEL
“**LEVEL 6**” BOASTS FLOOR TO CEILING
WINDOWS & NETWORKING SPACE’

	THEATRE	CLASSROOM	CABERAT	BOARDROOM	U-SHAPED	BANQUET	DIMENSIONS	AREA M ²
City View Suite	40	24	24	20	20	30	7 x 11.3 x 3	80.5
Harris Suite	80	54	48	36	44	60	15.2 x 6.5 x 2	98.8
City View & Harris Suite	150	80	80	-	45	110	22.2 x 6.5 x 3	144.3
Henihan Suite	40	21	21	16	18	30	7.4 x 6.6 x 2.6	48.48
O'Brien Suite	40	21	21	16	18	30	7.5 x 6.6 x 2.6	48.75
Wogan Suite	40	21	21	16	18	30	7.6 x 6.5 x 2.6	49.40
O'Brien & Wogan Suite	100	50	48	34	40	60	7.5 x 13.1 x 3	98.15
De Lacy Suite	18	8	-	10	12	-	3.9 x 6.6 x 3	25.74

	THEATRE	CLASSROOM	CABERAT	BOARDROOM	U-SHAPED	BANQUET	DIMENSIONS	AREA M ²
Clancy Room	16	6	-	10	8	-	5.3 x 6.1 x 2.6	32.33
O'Donoghue Room	16	6	-	8	8	-	5.3 x 6.1 x 2.6	21.35
O'Callaghan Room	16	6	-	8	8	-	5.3 x 6.1 x 2.6	21.35
Wall Room	16	6	-	8	8	-	5.3 x 6.1 x 2.6	21.35
Library	40	18	24	16	12	33	8.25 x 5.2 x 2.9	42.90

‘5 GROUND FLOOR
BOARDROOMS
THE IDEAL BREAKOUT
ROOMS’



‘BOASTING
HIGH CEILINGS,
NATURAL DAYLIGHT
AND AV EQUIPMENT
– IDEAL EXHIBITION
SPACE’

	THEATRE	CLASSROOM	CABERAT	BOARDROOM	U-SHAPED	BANQUET	DIMENSIONS	AREA M ²
The Shannon Suite	600	360	250	95	100	500	24.3 x17 x5.3	413.1
Shannon Suite 1	150	92	72	36	30	110	9.6 x17 x 5.3	163.2
Shannon Suite 2& 3	300	120	100	50	70	150	14.6 x 17 x 5.3	248.5
Shannon Suite 3	145	62	70	30	30	80	7.0 x 17 x 5.3	119